



Improving Early Warning for Storm Surge in Japan by “Probability of Warnings”

17th Integrated Workshop
ESCAP/WMO Typhoon Committee
29-30 November 2022

Yutaka Kobashigawa /JMA

Outline of this presentation

- JMA's early warning information (probability of warning) and how it is communicated with municipalities and the public.
- Upgraded early warning for storm surge in Japan by "Probability of Warnings."

Damage from storm surge disasters in Japan

Tropical cyclone Jebi 2018



Inundation of airport facilities
(Kansai International Airport)



Seawater rushing to the sluice gate due
to storm surge and high waves in Osaka.

Photo credits: Kinki Regional Development Bureau

Introduction

- The Japan Meteorological Agency issues an "Early Warning Information (**probability of warning**)" with two levels: "High" and "Medium", when a warning-level event (heavy rain, wind storm, etc.) is forecast for the next five days.

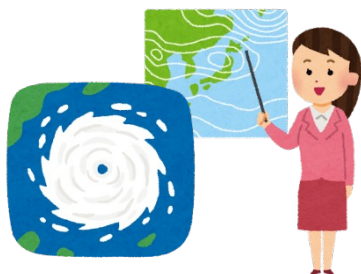
Southern ○○ Prefecture	From today to tomorrow					From the day after tomorrow to five days ahead			
	Probability of warning issuance								
	11/3	11/4				11/5	11/6	11/7	11/8
Target day/time	18-24	0-6	6-12	12-18	18-24	11/5	11/6	11/7	11/8
Heavy rain	[Mid]					–	–	[Mid]	–
Storm(Gale)			[High]	[High]	[High]	–	[Mid]	[High]	–
High waves			[High]	[High]	[High]	–	[Mid]	[High]	–
Storm surge			[High]	[High]	[High]		[Mid]	[High]	

Before six o'clock in the evening –
Provide probability of warning issuance tonight or early the next morning, to avoid evacuation in the middle of the night

Provide probability of warning issuance up to five days ahead to support the preparation needed for DRR stakeholders.

Storm surge early caution information

- The possibility of a storm surge warning level, which was only issued when a typhoon was present, is now issued daily as early warning information (possibility of a warning level), including storm surges caused by factors other than typhoons.
- If the possibility of a warning level for storm surge is [High] or [Medium] in the early warning information, it is placed at Alert Level 1, which requires increased preparedness for storm surge disasters.



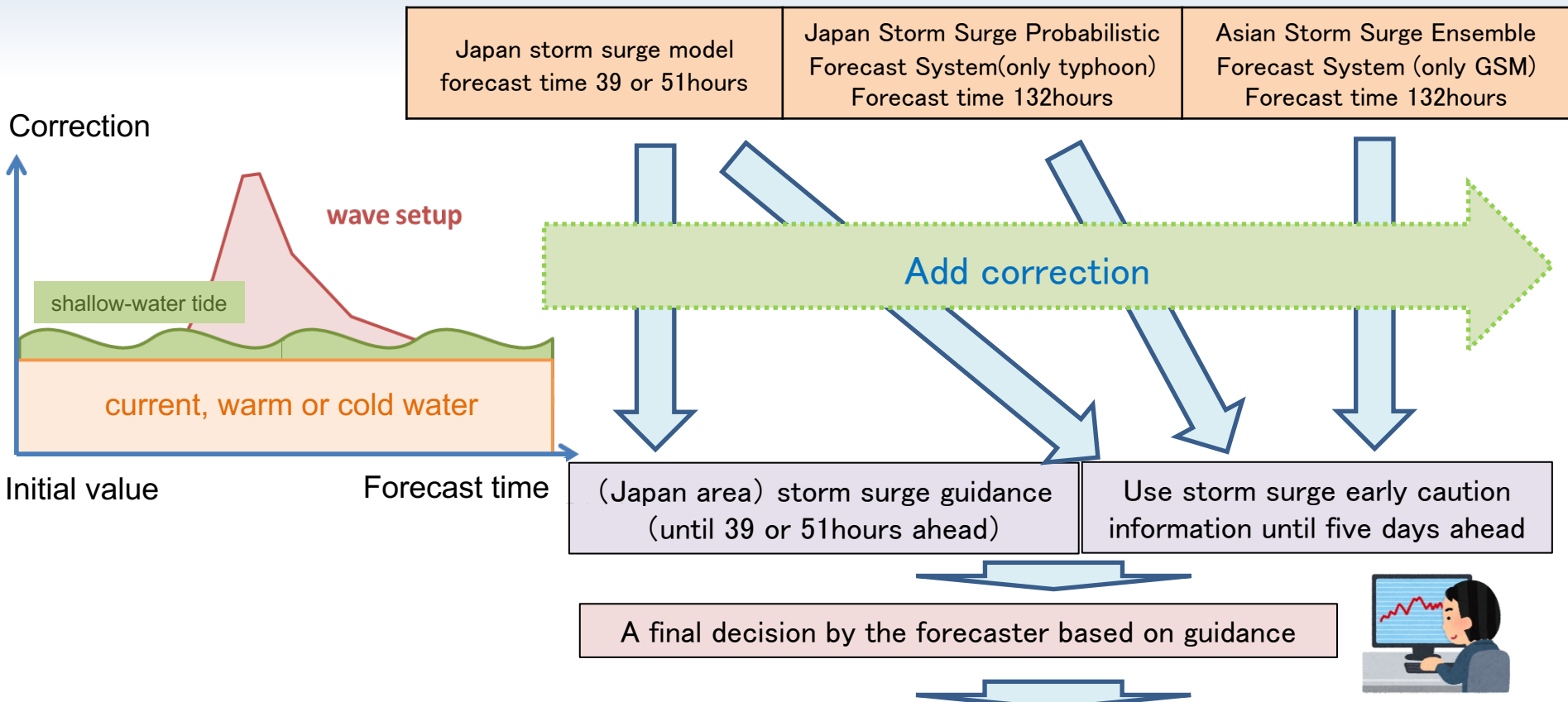
Alert Level		New Evacuation Information
5	Disaster occurrence/ Disaster impending	Emergency Safety Measures ※1
~<Be sure to evacuate by Alert Level 4!>~		
4	High risk of disaster	Evacuation Instruction ※2
3	Risk of disaster	Evacuation of the Elderly, Etc. ※3
2	Weather worsening	Heavy Rain, Flood, or Storm Surge Advisories (Japan Meteorological Agency)
1	Risk of weather worsening	Probability of Warnings (Japan Meteorological Agency)

Hyogo: Northern Region: Probability of warnings

Issued at 11:00 JST, 19 Oct 2022

Hyogo: Northern Region		10/19		10/20		10/21	10/22	10/23	10/24
		12-18	18-24	00-06	06-12				
Storm Surge	Probability of warnings	-	-	[Mid]		[High]	-	-	-

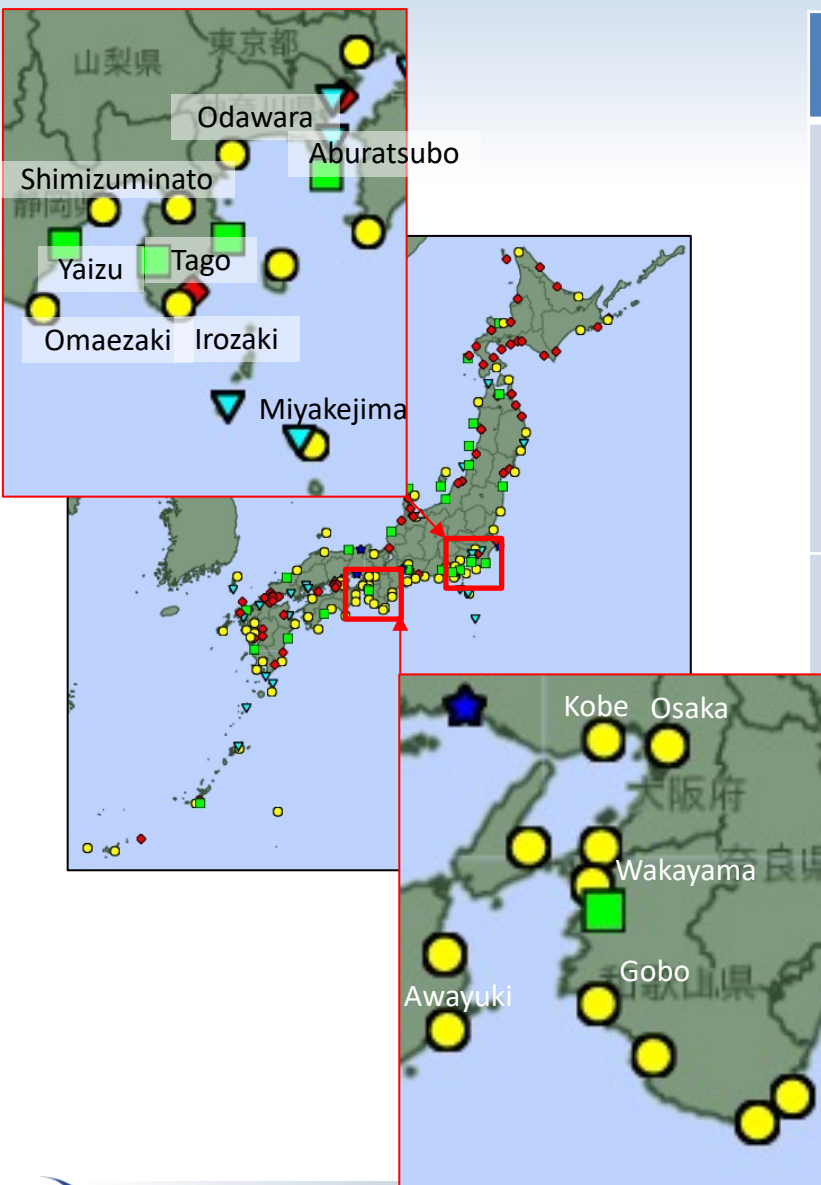
Outline of storm surge early caution information guidance



Warning grade possibility

Hyogo: Northern Region: Probability of warnings										
Issued at 11:00 JST, 19 Oct. 2022										
Hyogo: Northern Region		10/19		10/20			10/21	10/22	10/23	10/24
		12-18	18-24	00-06	06-12	12-24				
Storm Surge	Probability of warnings	-	-	[Mid]	[High]	-	-	-	-	-

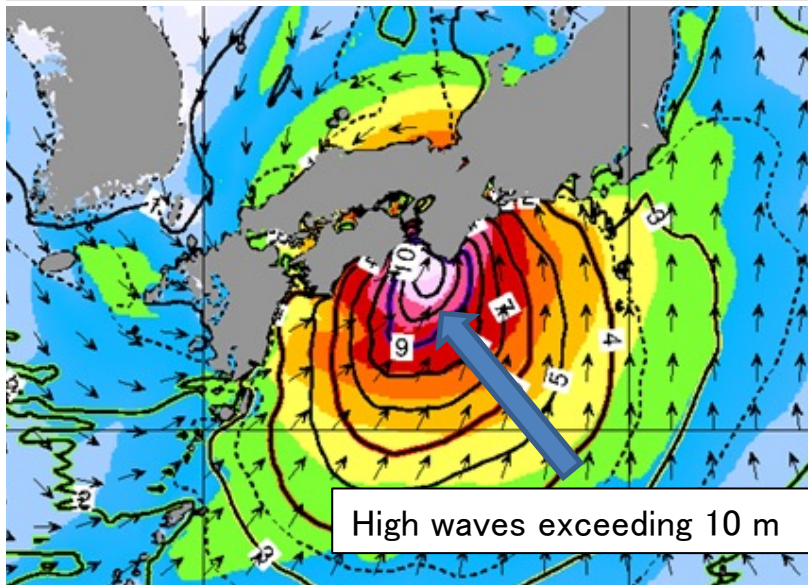
Past Case Studies Results



tropical cyclone	Warning criteria exceeded point	Forecast Results
T1821 (Jebi)	Osaka	Detection of exceeding warning criteria from 4 days in advance
	Kobe	
	Wakayama	Detection of exceeding warning criteria from 10 hours in advance
	Gobo	Miss (Underpredictions are thought to be due to the Wave Setup effect.)
	Awayuki	
	Irozaki	
T1919 (Hagibis)	Irozaki	Detection of exceeding warning criteria from 4 days in advance
	Miyakejima	
	Odawara	
	Omaezaki	
	Shimizuminato	
	Yaizu	
	Aburatsubo	
Tago	Detection of exceeding warning criteria from 8 hours in advance	

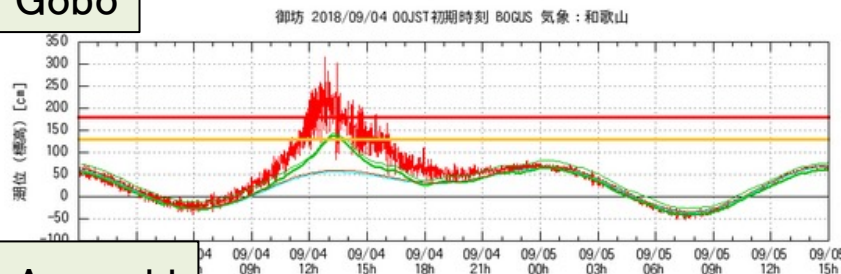
Missed Case Results Verification (T1821:Jebi)

Coastal wave model
2018/09/04 00UTC initial (FT=3)

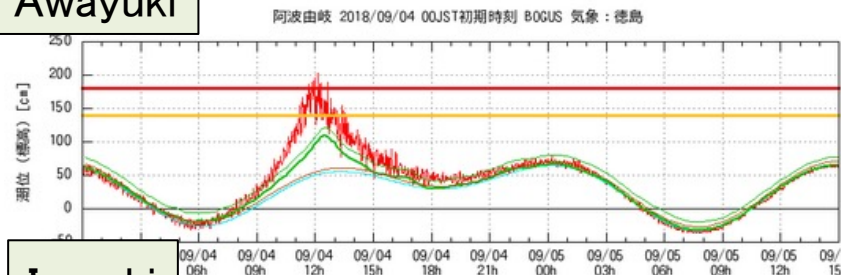


Japan storm surge model (Bogus center course)
2018/09/04日00UTC initial

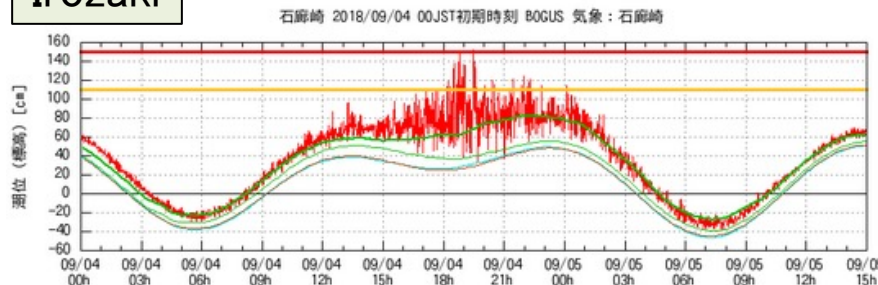
Gobo



Awayuki



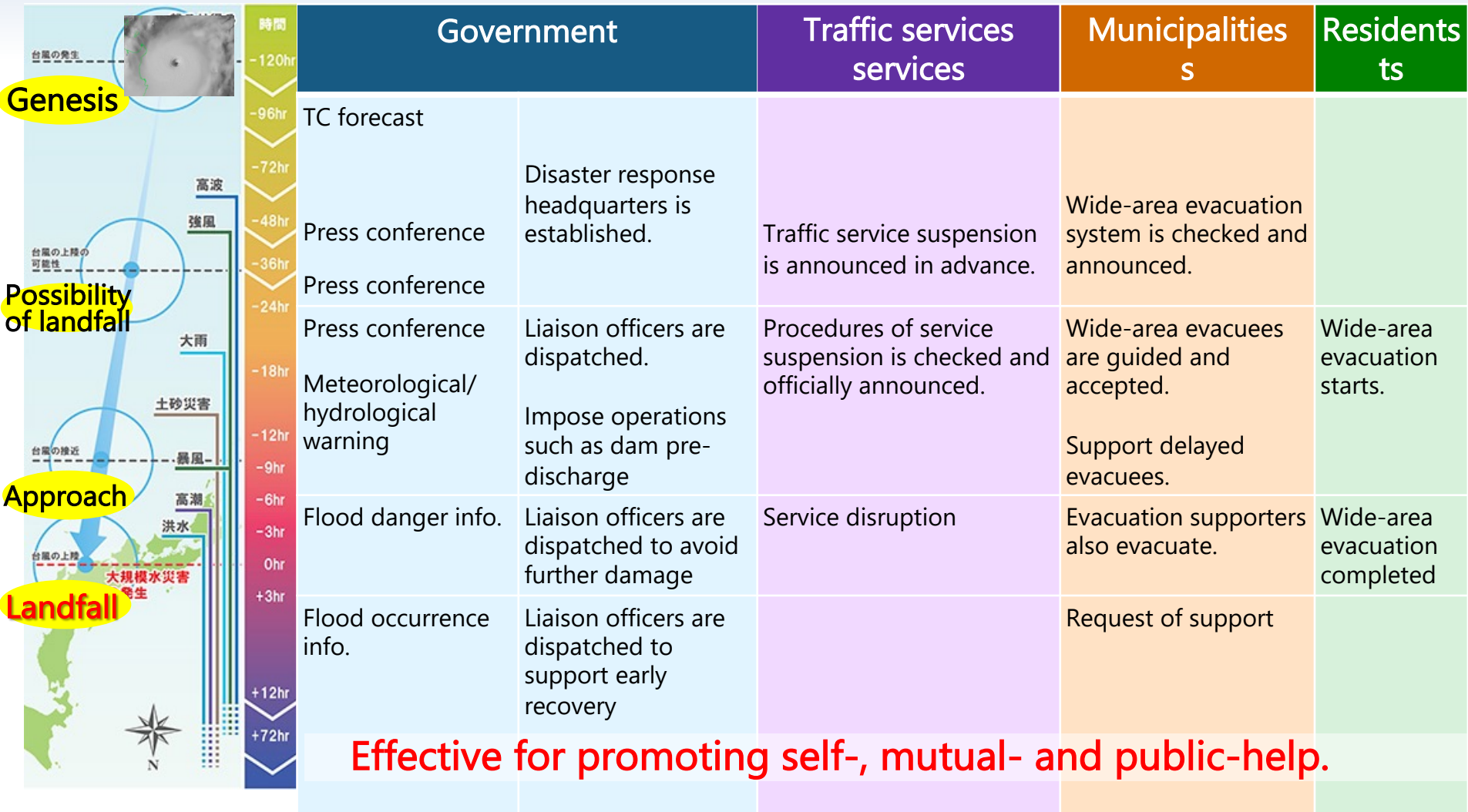
Irozaki



- Wave Setup has problems with the accuracy of guidance correction.

Red line: Observations Thick green line: Guidance Green Thin Line: Model

Timeline for DRR stakeholders – when, who and what



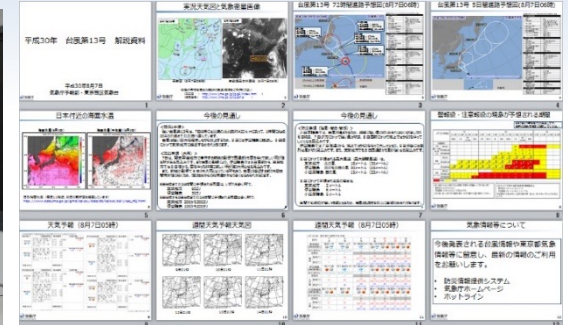
Actions – various approaches to support municipalities and the public

JMA takes all possible actions to support municipalities and encourage the public towards early evacuation

- (1) Press conferences
- (2) Briefing municipalities
- (3) Delivering “JETT” as needed



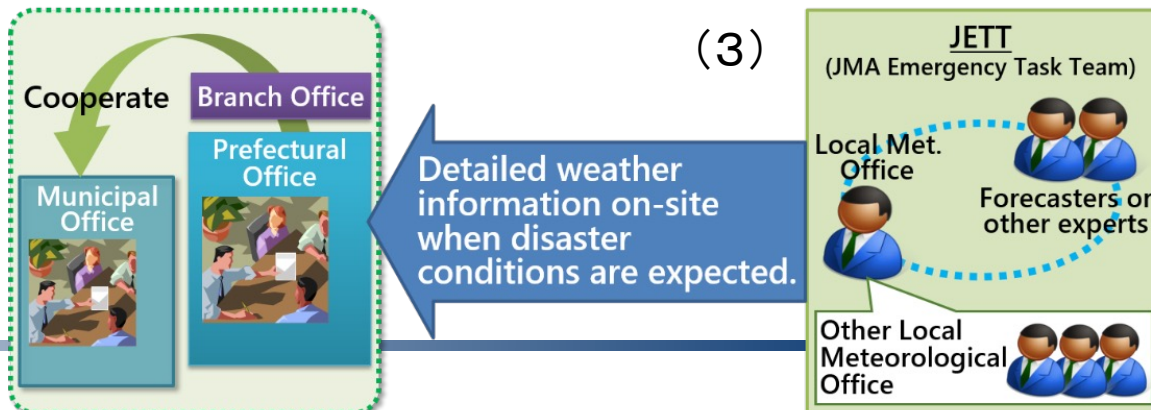
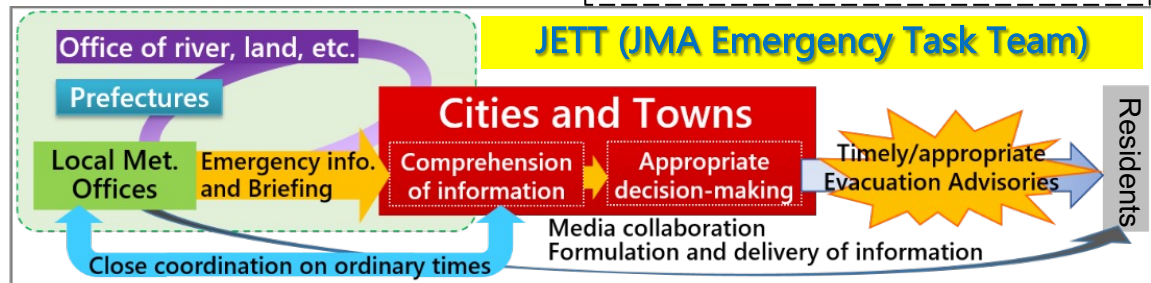
(2) Briefing to municipalities



(2) Various kinds of information (graphs, charts, etc.) are used during the briefing



(1) Press Conference



Summary

- The purpose of storm surge early warning information is to encourage people to check the storm surge hazard map for their area and to frequently check information such as Typhoon Information and Prefectural Weather Information to prepare themselves for storm surge disasters soon as possible.
- Storm surge early warning information guidance is developed using three storm surge models (Japan storm surge model, Japan storm surge probabilistic forecast system (PFS), and Asian storm surge ensemble prediction system (EPS)).
- In some past cases, the storm surge early warning guidance was able to capture the possibility of exceeding the warning criteria from an early stage to some extent. On the other hand, capturing the open ocean locations with significant wave setup was difficult.

Outline of storm surge early caution information guidance

	Today and tomorrow	2 to 5 days ahead
Forecast model	Typhoon approaching	
	Japan storm surge model (MSM or bogus center course) + Japan Storm Surge Probabilistic Forecast System	Asian Storm Surge Ensemble Forecast System (GSM) + Japan Storm Surge Probabilistic Forecast System
	No Typhoon	
	Japan storm surge model (MSM)	Asian Storm Surge Ensemble Forecast System (GSM)
Calculation frequency	4 times a day (00,06,12,18UTC)	
Provided Information	① Automatic determination value of the possibility of warning class ([High], [Medium], [Low], [None]) ② High tide (percentile) ③ Probability of exceeding the warning criteria	
Forecast publication time	05:00 11:00 17:00JST	11:00 17:00JST
Region	Primary subdivision	Subdivision of the weekly forecast